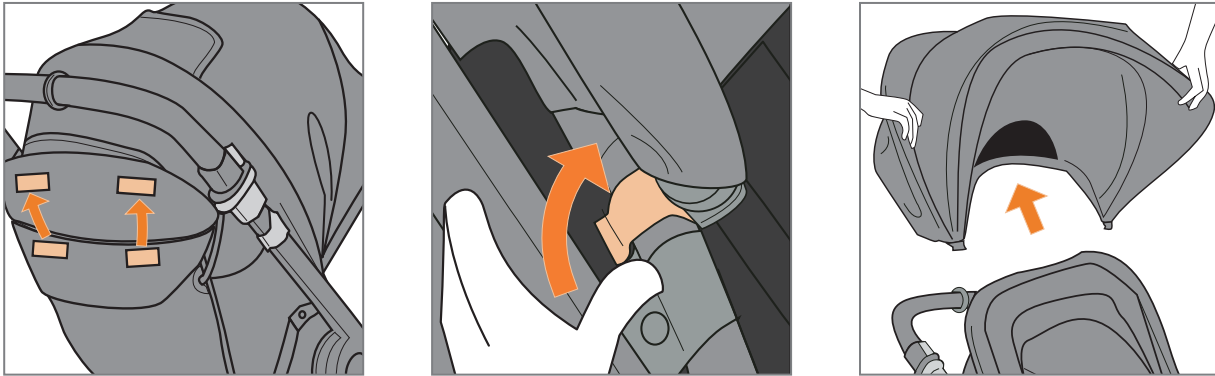
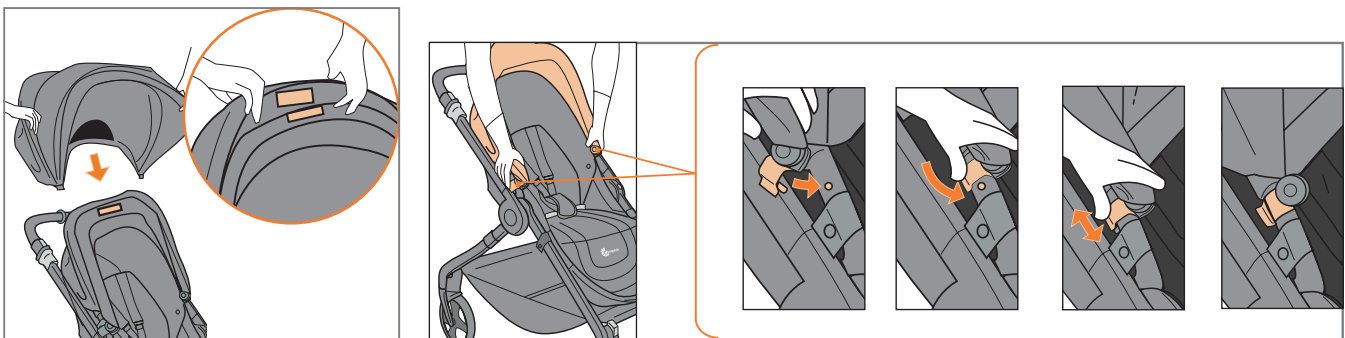


HOW TO REMOVE YOUR CURRENT SUNSHADE



Remove the rear sunshade velcro tabs on your current sunshade. Pop off the sunshade attachments from the frame. Pull off the sunshade from the frame by separating the middle velcro.

HOW TO INSTALL NEW SUNSHADE



Attach the sunshade middle velcro to the top of the seat backrest. The sunshade attachment is securely attached when clamped around the seat backrest tube and sunshade attachment bumps are aligned with the corresponding holes in the tube. First, clamp the attachment around the tube. Then slide the attachment up and down until the bumps settle into the holes in the seat backrest tube.